

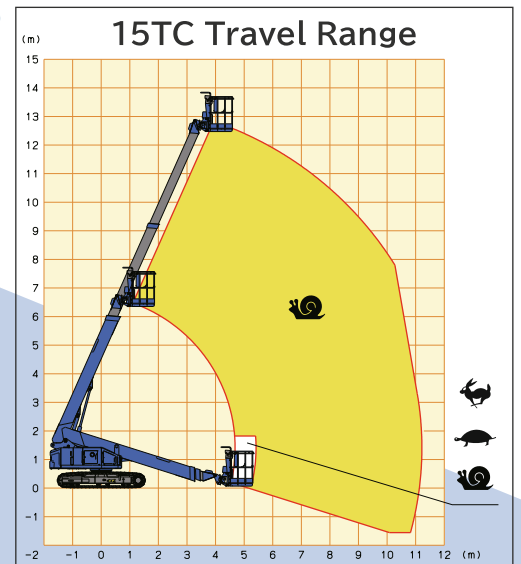
→ Nagano 15TC

Telescopic crawler boom

When difficult areas need to be reached, the easy-to-store and versatile 15TC helps you reach up, over and around.

STANDARD FEATURES

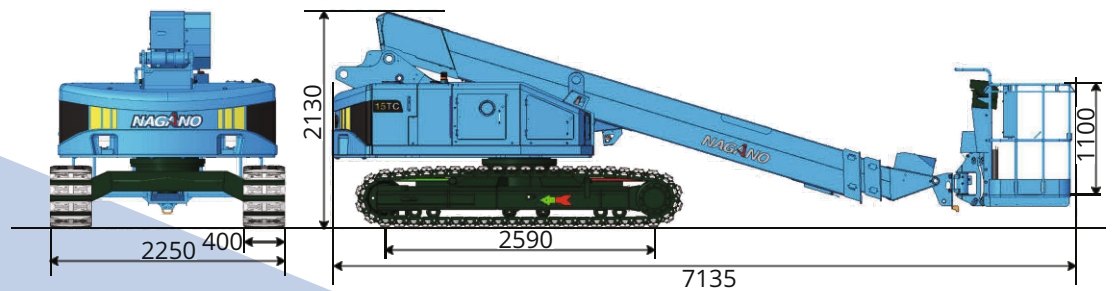
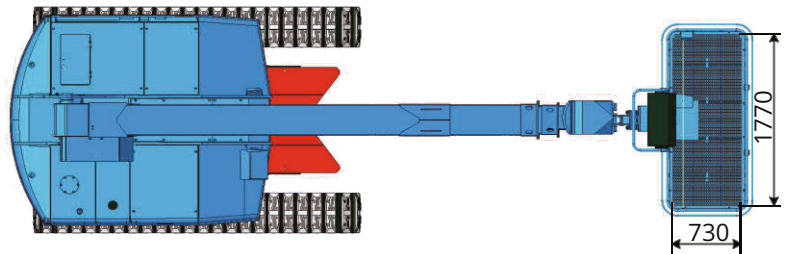
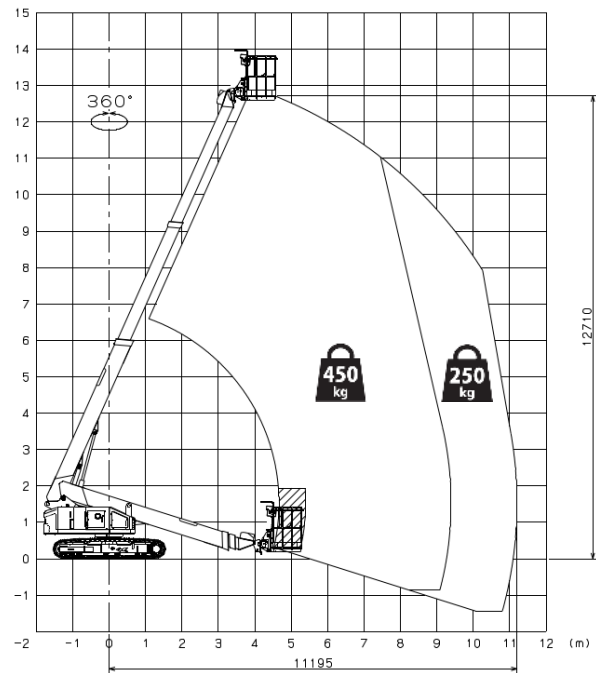
- ✓ 360 °
- ✓ Dual lifting capacity
- ✓ Low emission engine
- ✓ Full range traveling
- ✓ Low ground pressure
- ✓ Steel tracks with grey non marking pads
- ✓ Auxiliary lowering control
- ✓ LED Lighting system



MODEL	15TC
Max load capacity (dual)	450 kg / 250 kg
Tilt	5 °
Platform size (6 feet)	1,77 x 0,73 x 1,10 m
Max work height	14,70 m
Max outreach	11,20 m

MODEL		15TC
SPECIFICATIONS	Max work height	14,70 m
	Max outreach	11,20 m
	Allowable tilt	5 °
	Max load capacity (dual)	450 kg / 250 kg
	Platform size (L x W x H)	1,77 x 0,73 x 1,10 m
	Platform rotate angle	L90 ~ R90 °
	Transport dims (L x W x H)	7,14 x 2,25 x 2,13 m
	Machine weight (with pads)	9.060 kg
TRA.	Travel speeds	0,9 / 1,5 / 2,7 km/h
POWER SOURCE	Engine type	Kubota D1305
	Rated power	17,5 / 2400 kW/min
	Fuel tank capacity	100 L
SAFETY DEVICES	Emergency stop	✓
	Food switch / Enabling switch	✓
	Auxiliary lowering control	✓
	Traveling restriction (on slope)	✓
	Operation restriction (on slope)	✓
	Overload sensing system	✓
	Battery isolator switch	✓
	LED lighting	✓

15TC Working range



For all our types:

